

FOTRIC 226B/223B Quick-Start Manual

Operation Guide

1. Connect FOTRIC thermal camera to the power supply, with Fotric authorized power adaptor. And power on the FOTRIC thermal camera.



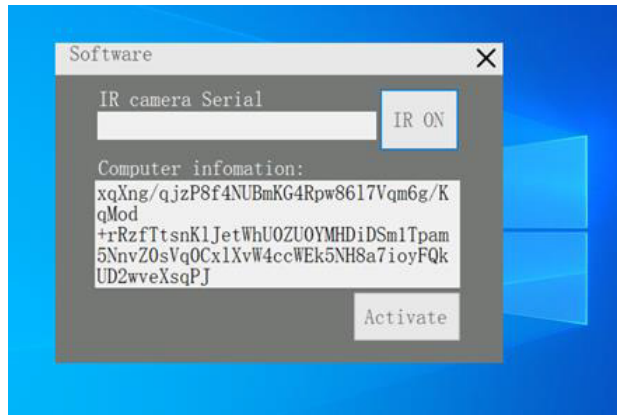
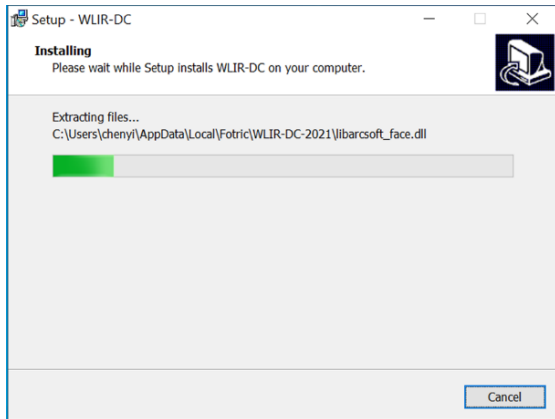
2. Connect the thermal camera to the computer with an USB cable.



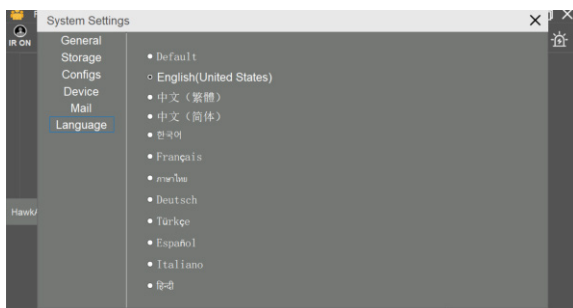
3. Connect the USB cable of the DC visible Light camera to the computer.



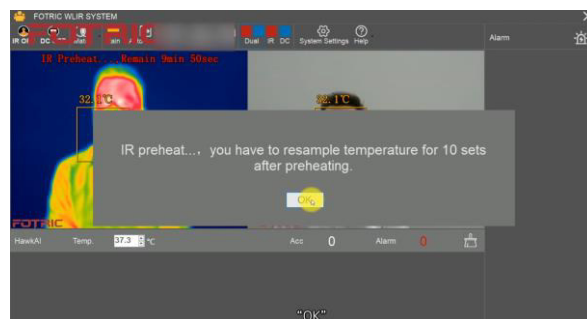
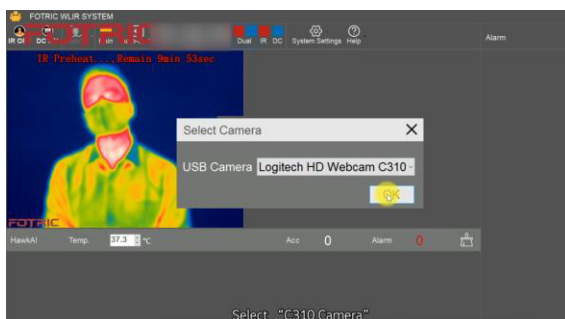
4. Install and open to activate the WLIR-DC software by connecting to network.
Please **MUST** refer to the installation manual.



5. Choose language interface and Units.



6. Connect WLIR to the IR Camera and the DC Camera.



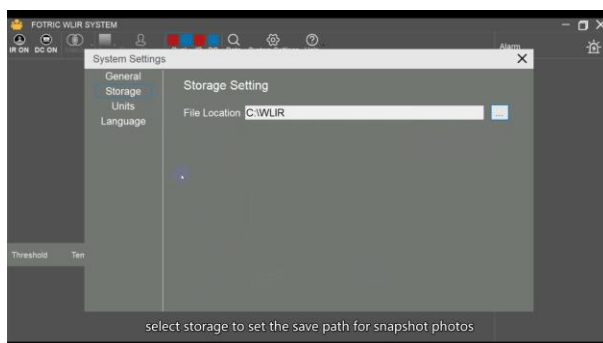
7. Adjust the focus of the IR Camera and match the IR image with the visible light image.



8. Recommend to use HAWKAI mode., and Set Temperature Alarm for capture photos.



9. Set alarm photo's file location. When temperature screening is in operation, an alarm will be triggered if an individual presents abnormal temperature.



Customer Support

1, Software and Installation Manual Download:

PC software WLIR-DC is a standard configuration of the product. Please visit the following website to download its installation setup, and installation manuals:

www.fotric.com/support-wlir-dc

2, Product User Manual Download:

Before using the product, please visit the following website to download and read the user manuals, FAQ documents and Operation videos:

<http://www.fotric.com/support-wlir-dc>

<https://www.youtube.com/watch?v=8Wei0dy4AkQ&list=PLMdNbefH3FiWWiBQYvcHbmCECguw1u72q&index=1>

FOTRIC INC.

www.fotric.com

info@fotric.com